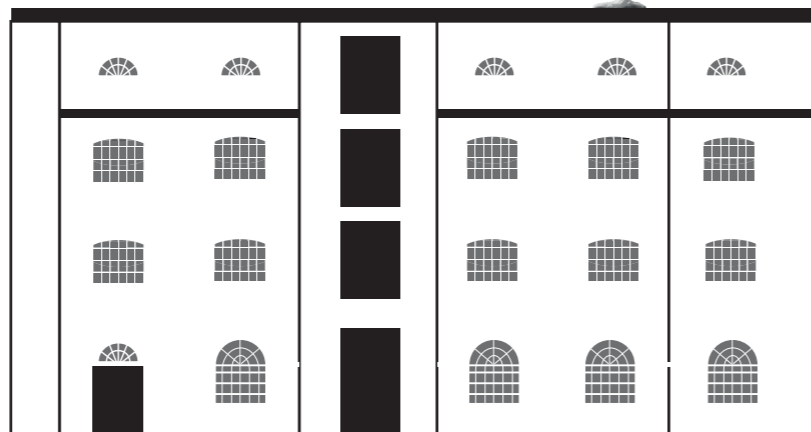


# Secrets of the Warehouse

For over 150 years, this building was a warehouse, storing tea, coffee and spices. It also stored sugar produced by enslaved people.

There are many clues in the building that tell us about this history. Use this trail to discover them.

FREE  
FAMILY  
TRAIL



## 1 No.1 Warehouse



Look at, or lie on, the floor. What do you notice? Is it even?

The floors of the warehouse were sloped like a hill to stop goods rolling back out of the loop-hole doors.

These are loop-hole doors. Dockers used ropes to pull heavy goods up from the docks and into the warehouse.

Can you spot the pulley outside where the rope would be? Imagine what it was like working so high up. Would you be frightened or excited?



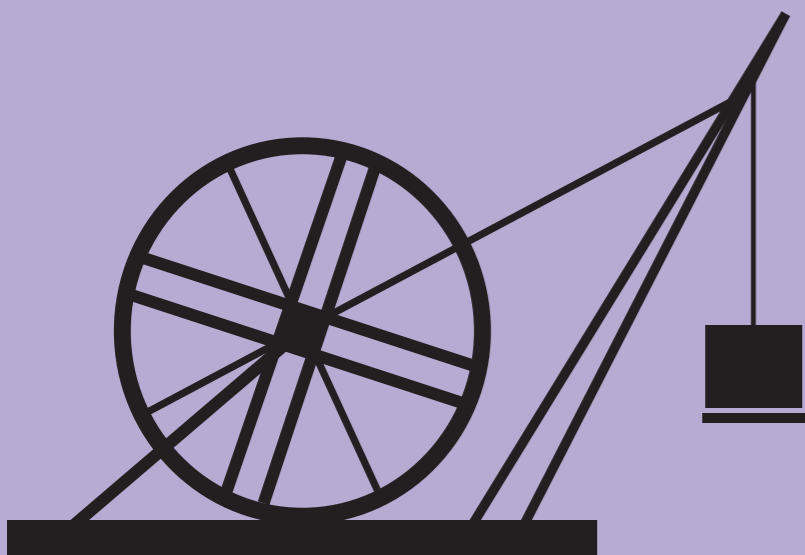
## 2 Legal Quay

Look above you. Can you see the treadwheel?

This powered a crane to lift heavy cargo, like barrels, that dockers couldn't move on their own.

Try the treadwheel or watch someone else use it.

How would you feel after working on a treadwheel all day?



## 3 City and River

Find some smaller pillars.

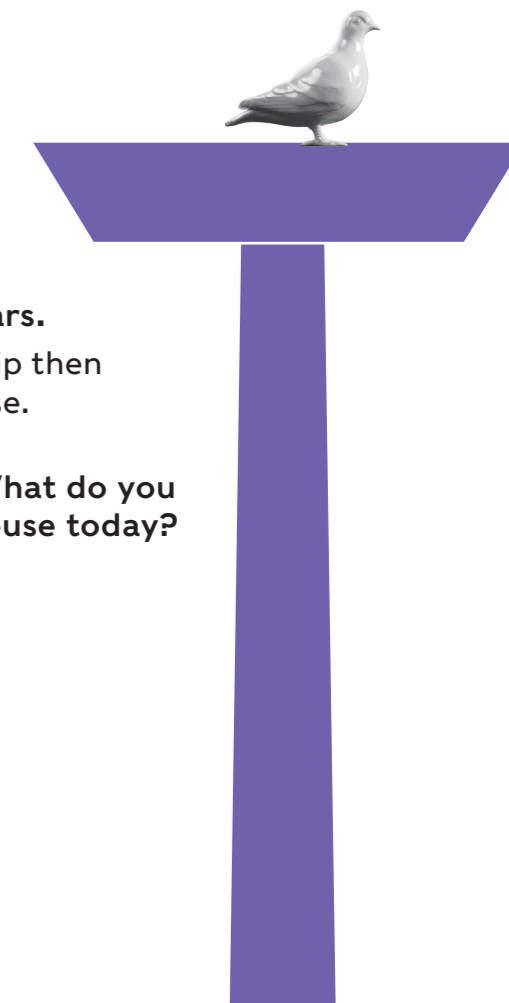
These were first in a ship then reused in this warehouse.

Why do you think materials were recycled?

What do you reuse today?

These pillars are made of pitch pine, a kind of wood. They keep the building up instead of walls.

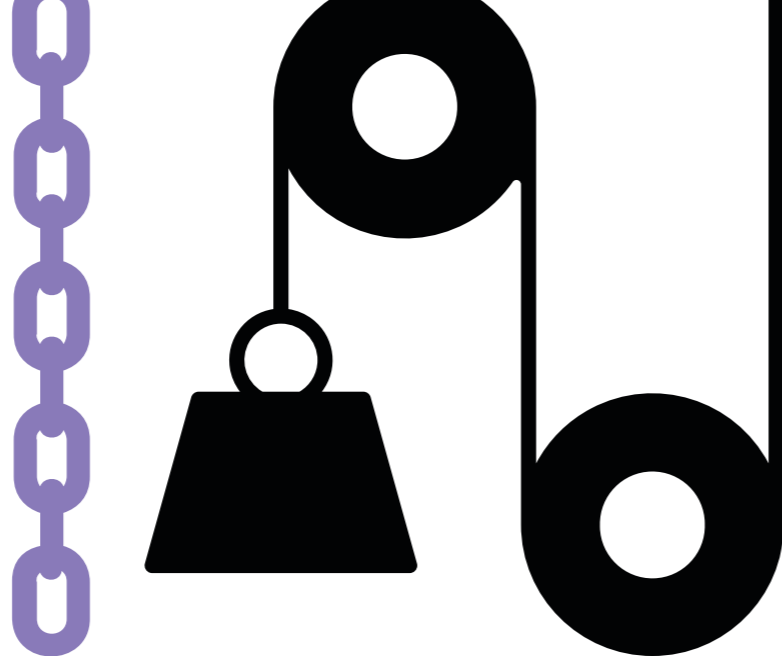
Why would a warehouse need large open spaces rather than smaller rooms?



4

## Warehouse of the World

As technology changed, so did warehouses. Jiggers like the one against the wall in this gallery used water power to move heavy cargo.



It was important for warehouses to keep up with technology. Why do you think that was?

Does new technology always make things better?

5

## Docklands at War

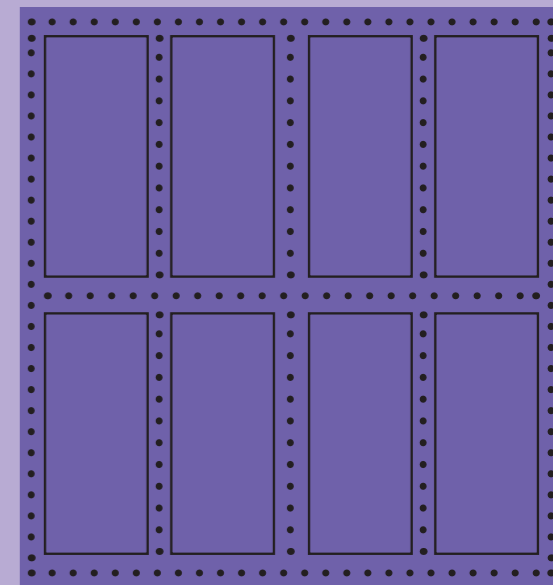
Large areas of the docks were destroyed during the Second World War.

Find the red doors opposite the Black Saturday film at the start of the gallery.

What do they feel like?

These doors stopped fire spreading in the warehouses, so it didn't harm the people and goods inside.

Why do you think these doors were so good at stopping fires?



6

## New Port, New City

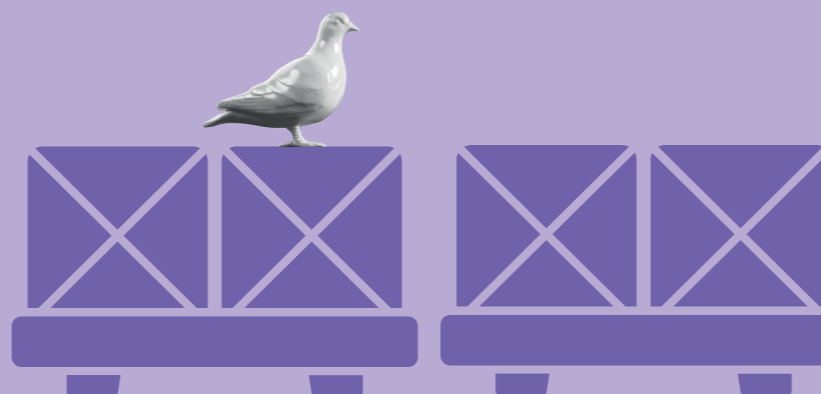
Can you find this sign above the red door?

**NOTICE**  
**THIS GATE WILL BE CLOSED**  
**FROM 24 NOV 1980**

With the invention of shipping containers, goods could be shipped more quickly. However, the containers didn't fit in warehouses. Because of this, warehouses fell out of use and the docks closed. The land was used to build offices and banks instead.

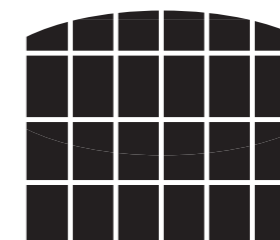
Do you think people from the past would be surprised that this warehouse is now a museum?

What do you think this building could become in the future?



See what secrets you can uncover from outside of the building.

Look at the windows. Is there anything unusual about them?



Why do you think that there are bars on the windows? Is there anything else that's unusual about the building?

